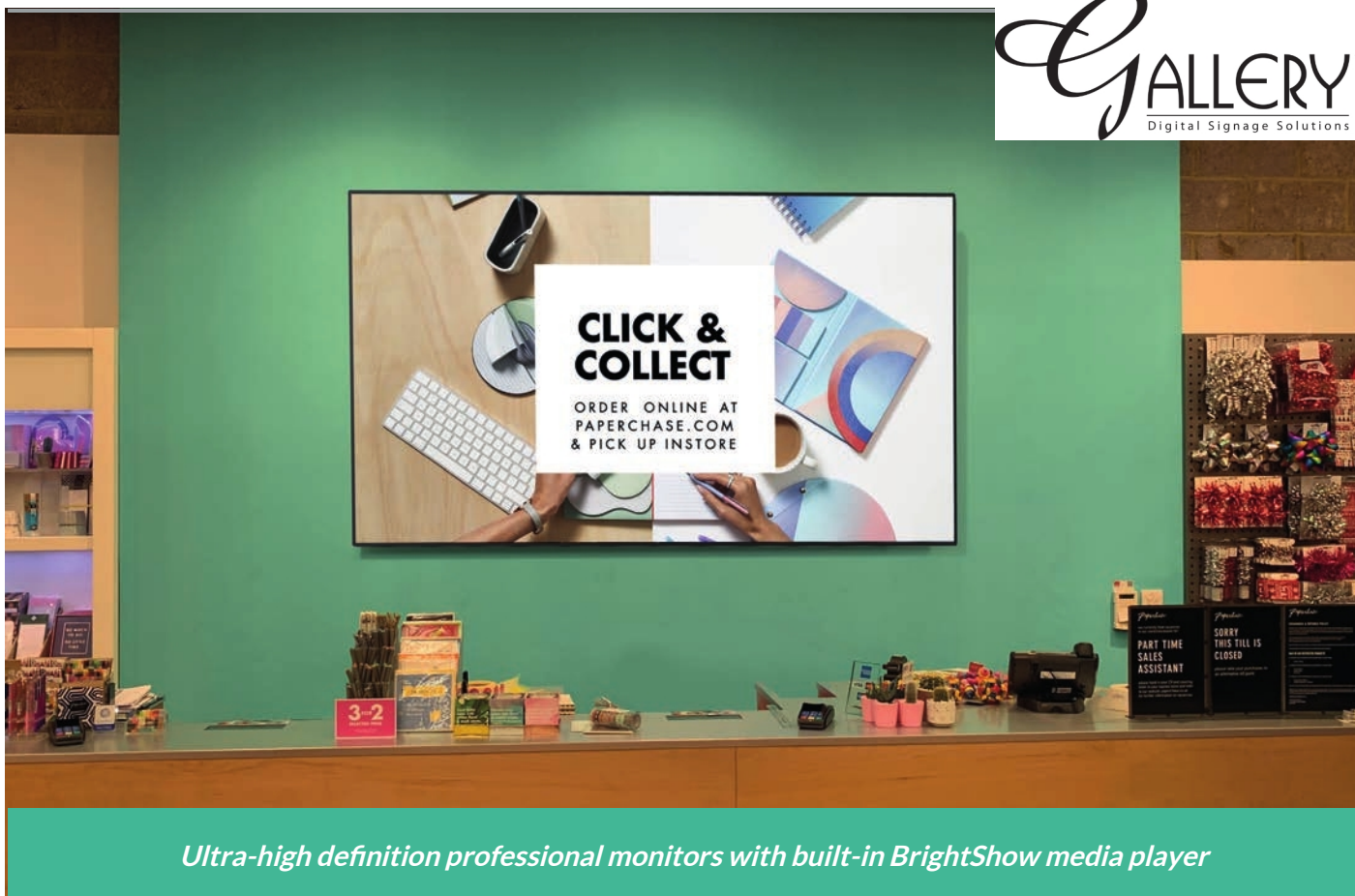


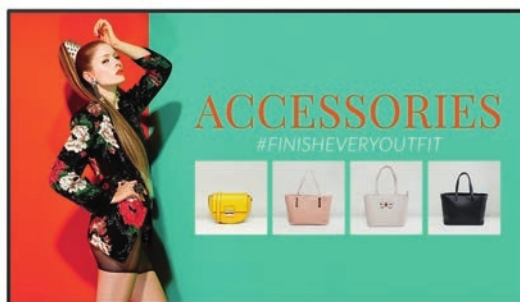
## 65" 4K Large Format Display



*Ultra-high definition professional monitors with built-in BrightShow media player*

### Lightweight Design

By using less and lighter materials this generation is considerably lighter than the previous version, making installation and maintenance much more convenient.



### 24/7 Commercial Use

These displays use a commercial grade LCD panel and LED backlight. They have the ability to be in constant use 24/7 for over 70,000 hours and have no external buttons or controls to avoid tampering.



Narrow Bezel



4K Resolution



RS-232



Wide Viewing Angle



Power Timer



Low Power Consumption



Integrated Speakers



Landscape/Portrait Orientation

Key Features



PLUG AND PLAY



INTEGRATED ANDROID  
MEDIA PLAYER



24/7 COMMERCIAL GRADE



ECO POWER TIMER



OPTIONAL OPS PC

LANDSCAPE OR PORTRAIT  
ORIENTATION

CONNECT DEVICES

SLIM BEZEL



4K

3840x2160

4K DISPLAY

OPTIONAL OPS PC

SUPER SLIM BEZEL

RS-232 CONTROL

## Specification Table

		65 Inch
Panel	Resolution	3840x2160
	Display Area (inch)	56.24 x 31.63
	Aspect Ratio	16:9
	Brightness (cd/m²)	450
	Colour	16.7M
	Viewing Angle	178°
	Contrast Ratio	1000:1
Audio	Speaker Type	Stereo: 10W, 4Ω x 2, Bass: 15W, 8Ω x 1
AV Inputs	Inputs	HDMI x 2
	Outputs	HDMI Out, Audio Out
	Control	RS-232
Power	Power Consumption (W)	280
	Input Voltage	AC110~240V(50Hz~60Hz)
Mechanical	Unit Size (WxHxD inch)	57.65x33.05x2.44
	Package Size (WxHxD inch)	64.17x39.76x8.46
	VESA Holes (mm)	400x400/400x600
	Net Weight (lb)	56.98
	Gross Weight (lb)	83.33
Environmental	Operating Temperature	32 °F to 104 °F
	Storage Temperature	-14°F to 131°F
	Operating Humidity	10% to 80%
	Storage Humidity	10% to 80%
Computer	Media Formats	Video (MPG, AVI, MP4, RM, RMVB, TS), Audio (MP3, WMA), Image (JPG, GIF, BMP, PNG)
	Media Resolution	1920x1080/1080x1920
	CPU	ARM Quad-core Cortex-A53 1.5GHz
	RAM	2GB DDR3
	Architecture	64-bit
	Graphic Engine	ARM Mali T720mp2
	Hard Drive/Internal Memory (eMMC)	16GB
	USB	USB 2.0 x2
	LAN	10/100 Ethernet
	Wi-Fi	802.11b/g/n/ac
	OS	Android 6.0
Accessories	Included	Remote Control, User Manual, Power Lead
	Optional	Network Upgrade
Warranty	Warranty Period	2 Year Warranty
	Technical Support	Lifetime

Errors and omissions excepted



